

Salaried doctors agreement in operation, VMO arbitration next

The ACT Public Sector Medical Practitioners Enterprise Agreement 2013-2017 has finally been approved by the Fair Work Commission with effect from 27th January 2016. The Agreement covers all medical practitioners employed by the ACT Health Directorate and Calvary Health Care ACT.

While much of the change contained in the Agreement focuses on salary and leave, there are, however, improvements to DIT conference leave and support for overseas activities.

Salary Increases

With the new agreement covering a period dating back to 2013, salary increases of 2%, 1.5% and 1.5% will flow through immediately and a further 1.5% from October this year. AMA (ACT) understands that these new rates should have been paid from 25 February.

Back pay should be paid on or by 24 March. Former staff who have resigned since 1 July 2013 will also be eligible for back pay.

Allowance rates will be increased in line with annual pay increases.

Changes to Leave

Several new or enhanced leave provisions are part of the new agreement with bonding leave extended and fostering, short time caring, adoption and permanent care arrangements amended. Domestic violence leave has also been introduced.

New provisions have been introduced to enable cashing out of annual leave and long service leave. The latter can be cashed out in full or partially, up to accrued credit. Some restrictions apply to the cashing out of annual leave.

Conference Leave

Reimbursement of conference leave expenses for DITs, Career Medical Officers and Post Graduate Fellows are to be indexed annually. The trade-off for this improvement is that the JMO Bonus has been deleted.

Expenses for overseas conferences can now be claimed subject to travel being approved in advance.

Other Changes

In line with the Fair Work Act, employees may now seek flexible working arrangements based on caring responsibilities, disability and being over the age of 55.

The provisions for breaks following a period of seven consecutive days' duty or following a period of night duty have been amended from 24 hours to 1 day and 48 hours to 2 days, respectively. To avoid any ambiguity, a day is defined as the period from midnight to midnight.

If you have any questions, please contact Andy Ozolins; phone 6270 5410 or email industrial@ama-act.com.au

VMO Arbitration

Following the negotiating period that concluded in the latter part of 2015, the AMA (ACT), Visiting Medical Officers Association (VMOA) and ACT Health have produced an agreed statement of facts for presentation to the arbitrator, Mr Greg

Smith. Mr Smith's appointment as arbitrator was made by Minister Corbell and notified to AMA (ACT) and the VMOA at the conclusion of last year.

The arbitration itself is set down for the first week of April.

The major areas of contention deal with ACT Health's claim for a "more flexible" contract with greater controls over VMO payments and the ability to vary the contract terms with minimal notice. ACT Health's claim includes a proposal to make any increase in rates subject to efficiencies gained from the new contract provisions.

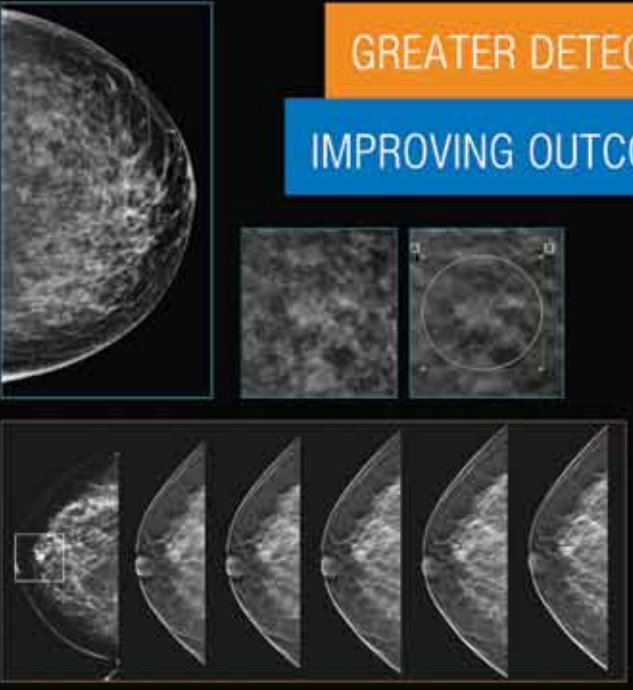
The AMA's main claims are in regard to an annualised 2.5%

increase in rates, payment for attendance at training and for supervisory purposes and additional VMO parking. The VMOA has similar objectives and we strongly support the VMOA proposal to have VMOs more involved in hospital and departmental-life.

We are similarly in agreement with the VMOA in opposing ACT Health's claims for a range of greater controls over VMO arrangements including termination rights and variation to workloads with very limited notice.

Submissions to the arbitrator are now being prepared with the hearing dates a little over a month away.





GREATER DETECTION
IMPROVING OUTCOMES


CANBERRA IMAGING GROUP 3D Mammography

Genius 3D mammography, now at CIG, is the only system with proven superior clinical performance*

- By minimising structure overlap, 3D mammography optimally demonstrates masses and architectural distortion*
- **Detects 41% more invasive cancers** than 2D alone*
- Studies show a **15-40% reduction** in recall rates*
- Cancer detection is increased by 27% overall*

*References available on our website.

For 3D Mammography & Tomosynthesis bookings, phone **1300 788 508** or visit www.canberraimaging.com.au/3dmammo



Capital Conversations with President, Dr Elizabeth Gallagher



Although it may seem a little late, with this being my first column of the year, I'd like to extend my best wishes for a happy new year to all the readers of the Canberra Doctor.

As I get older, it seems time, and life are flying past; my children have grown into young men in the blink of an eye, I'm already planning for 2017 and the biggest challenge continues to be simply to stop and smell the roses.

I have really enjoyed my time as AMA (ACT) President not least of which because of the range of issues that come across my desk. Working as a clinician is hugely rewarding but then being asked for public comment on or insights into medico-politics, service provision, budgeting, public health issues, integration of care and all to the deadlines of media can be quite daunting. It took me at least a year to feel comfortable and understand just how the media works and ensure the views of the medical profession are regularly part of the public debate about health.

Then only the other day, I realised my term as AMA (ACT) President comes to an end in about 10 weeks!

AMA (ACT) AGM and new President

On that note, the AMA (ACT) AGM and installation of Prof Steve Robson as the new President will be held on Wednesday 11 May at the Realm Hotel in Barton. This year, I invite all members to join us from 6.30 pm for drinks followed by a two-course dinner

– all for \$35 per head. If you can't make dinner please come along for the AGM commencing at 8pm.

Of course, I'm looking forward to making the AGM a more social event and am very keen to meet and talk with new members, catch up with colleagues and reacquaint myself with friends I may not have seen for some time.

A/Prof Brian Owler at TCH

Another date for your diary is Wednesday 30 March where AMA (ACT) is hosting the AMA President, A/Prof Brian Owler, at an Open Forum in the Auditorium of the ANU Medical School at Canberra Hospital. Come along and join us, with refreshments available from 6.30pm and the Forum to start at 6.45pm. Brian has kindly agreed to give a short update on issues the AMA is currently dealing with and then take questions from the floor.

If you can't make it to the Forum, please send us your questions and we'll pass the best of them on to Brian for an answer at the Forum. Don't forget – it's a free event and open to all medical practitioners and medical students in the Canberra region.

2015 AMA (ACT) Student Leadership Prize

Each year, AMA (ACT) through the ANU Medical School, funds a student prize for leadership. In 2015, Dr Lauren O'Rourke was the recipient with the award being made at the ANU Medical School Graduation Ball held prior to Christmas. Lauren has been an outstanding leader in the ranks of medical students and we are looking forward to working with her into the future as she progresses through her medical career.

On the morning prior to the graduation ball, AMA (ACT) hosted a breakfast for the graduates in recognition of their achievements and to welcome them to the medical profession. AMA Federal Vice-President, Dr Steve Parnis attended and spoke to the graduates along with AMA (ACT) President-elect, Dr Steve Robson and Board, members Dr Andrew Miller and Dr Suzanne Davey.

My thanks to Steve Parnis and the AMA (ACT) Board members and also to the new graduates and interns for helping us sign up more than 50 new members over both the breakfast and subsequent intern orientation. I want the interns and all the other existing and new Doctors in Training working with ACT Health in 2016 to know that you have the support of the AMA (ACT) both now and in your future careers.

Finally, on the list of recent events, I had the pleasure of hosting our annual "Welcome Drinks" for first year Medical Students during their "O Week" at the Uni Pub. Steve Robson and I had the opportunity to talk and mingle with the new class, learning a little about them and, in return, giving them a better understanding of the AMA. The current crop of students will enter into a far different workforce – and workplace – than even a few short years ago with significantly different opportunities and threats to their chosen careers.

A good reason to join

With the new term starting and membership renewals upon us, I'm always reminded that the AMA is one of very few organisations – or maybe the only one – that will be with you for your entire medical career. From students, through to new graduates, to Doctors in

Training, fellowships and into specialist practice and even into retirement. While the AMA cannot be everything to everyone all of the time – if you do not have a voice, you will not be heard.

That's why your membership is vital.

2016 – The year of the election

A Perfect Storm of elections are brewing this year with both a local, ACT election and a likely double dissolution Federal election occurring in the second part of the year. The recent release of the AMA Public Hospital Report card highlighted that the quality of health care is not keeping up with demand and expectations and that the Federal Government, in particular, needs to come to the party on health funding.

As the ACT election approaches, we look forward to hearing from Labor, the Liberals and the Greens on their plans

for healthcare. AMA (ACT) will continue to talk to all the parties and test their views against what we know of the health system, the needs of patients, and the concerns of doctors.

Finally, I'd like to congratulate Dr Rashmi Sharma on her Australia Day Award. Rashmi has been a hard working representative of our profession for many years, and the award is just recognition. Congratulations Rashmi!

AMA Career Assist

– supporting you on your professional journey

For professional advice on career options, preparing your application, CV development and presentation, contact your local support service.

Contact your AMA ACT for Careers Assistance. Phone 6270 5410.



Universal Medical Imaging

1/110, GILES STREET, CNR PRINTERS WAY, KINGSTON FORESHORE
MRI SUITE: XAVIER BUILDING, CALVARY PUBLIC HOSPITAL, BRUCE



GASTROINTESTINAL SERVICES

Bowel

- General X-Ray and CT
- Small Bowel Ultrasound
- Small Bowel MR Enterography
- MRI Rectum

Liver

- Multiphase CT
- MRCP
- Liver MRI with Hepatobiliary Contrast Agents

Universal Medical Imaging is dedicated to providing the highest quality diagnostic service to the ACT Region. Our Radiologists are available for clinical consultation and interventional procedures with subspecialty interest in MSK, Breast and Prostate Imaging Procedures.

Ph. 02 6126 5000
Email. admin@umic.com.au

General X-Ray • MRI • CT Scan • Mammography • Ultrasound • BMD
Breast Imaging Consultations • Imaging Guided Procedures • Spinal Injections

Canberra GP Dr Rashmi Sharma awarded OAM

Well-known Canberra GP, educator and former Medicare Local chair, Dr Rashmi Sharma has been awarded the Medal of the Order of Australia (OAM) in the 2016 Australia Day honours for her service to medicine, and to professional organisations.



The Canberra Doctor and AMA (ACT) congratulates Dr Sharma on the award and acknowledge both her past service and her current roles as a board member of AMA (ACT) and the Chair of AMA (ACT)'s Advisory Council.

In addition to her current clinical practice, Dr Sharma is an Adjunct Associate Professor and GP supervisor with the Australian National University and a former senior lecturer and clinical skills tutor. Her history of involvement in vocational general practice training is extensive, having been a GP supervisor training GP registrars since 2003 and a medical educator with the former Coast City Country GP Training, the regional training provider.

Over the last 12 years, Dr Sharma has also played an important role in Canberra-based advocacy and health policy development. From 2007 until 2014 she was chair of the ACT Medicare Local (now the Primary Health Network) and prior to that a board member from 2004. She's also been chair of the Practice Principals Group,

the GP Advisory Committee and Clinical Governance Committee.

Dr Sharma moved to Australia in 1993, after finishing med school in the UK where she was born, with her first job as a registrar in a small Queensland country town. She says it was a great start to her Australian life and she learnt quickly in a range of areas.

"Australia has one of the best health systems in the world and part of that is attributable to the high standards it demands of its health professionals. I had to sit the Australian Medical Council exams when I migrated from the UK."

"I agree the process of navigating the system to get through the relevant exams and get qualifications recognised can be complex, but I think people need to persevere, link into local help and see how they go."

Since then, of course, things have changed not only for Dr Sharma but in medicine more generally, "there are more wom-

en studying medicine in Australia than men, but I think the issue is the recognition of women in these senior roles,"

"We know that there is a lack of female representation in leadership and governance roles and I think this reflects on Australian society as a whole where we know gender equity is still an issue" Dr Sharma said.

With a busy life split between her northern NSW farm, Canberra and Sydney Dr Sharma feels that life's working out well, in a good place, "I live in Murwillumbah in northern NSW with my two, husband Stuart and my parents on my farm. I commute to Canberra for work and spend three days away from home, either at my surgery or on government-related work.

"I then spend four days at home where I head up GP training for the North Coast region. It's a bit nutty, but I enjoy it! I think I get the best of both worlds – a career I enjoy as well as a satisfying family life."

Personal and supportive service

Doctors' Health Advisory Service (ACT)

Here for you and your needs

The DHAS (ACT) provides peer support for you and your family

The DHAS (ACT) provides a protective environment of anonymity, cultural sensitivity, confidentiality and discretion. There is no charge for using the DHAS (ACT).

The DHAS (ACT) is a group of experienced Canberra-based general practitioners who are committed to providing support to colleagues and their families experiencing difficult times – which may include:

- a stressful incident
- violence or trauma in your workplace
- workplace issues such as bullying or harassment
- workload concerns
- feelings of stress or inability to cope
- burnout
- your professional life
- your career plans
- personal issues
- your well-being

The DHAS (ACT) can link you with expert services and resources according to your needs.

Privacy and confidentiality are assured.

The DHAS (ACT) is fully supported by, but operates independently of, the AMA (ACT) Ltd as a community service.

0407 265 414 24 hours



THE GMI DIFFERENCE

97% of our patients would recommend us!

- › Improved outcomes
- › Exceptional service

We work closely with you to ensure the best possible results are achieved for your patients.

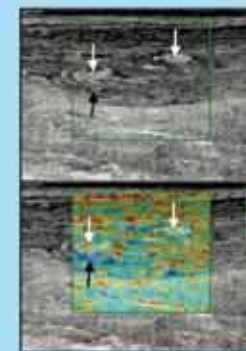
We also have a highly experienced team available to meet your patient's individual needs.

Introducing the most clinically useful technologies:

- › Liver fibrosis assessment
- › xSPECT Bone Scans
- › Tendon evaluation with elastoscan



xSPECT Bone of fibula stress fractures



Elastoscan

OUR SERVICES

Using the latest technology in:

- MRI – 3T SYSTEM**
- CT ADVANCED 160 MULTISLICE SCANNER**
- NUCLEAR MEDICINE**
Including X-SPECT-CT and Quantitative Analysis
- INTERVENTION AND PROCEDURES**
- GENERAL X-RAYS**

- ULTRASOUND**
General, Musculoskeletal, Obstetric and Doppler/ Arterial Studies
- BONE DENSITOMETRY**
- WHOLE BODY COMPOSITION ANALYSIS**
- OPG – DENTAL**

AN INTEGRAL PART OF YOUR SOLUTION

GET IN TOUCH WITH GMI
6225 7070
garranmedicalimaging.com.au

2016: A year of challenges for health policy

With the growing need to meet the challenges of 21st century healthcare, Stephen Duckett indicates change is on the horizon.

We start 2016 as we started 2015 – with big challenges for the health system and uncertainty as to how government will meet them.

The healthcare headaches in 2016 are, in fact, the same ones we faced a decade ago, albeit different in severity and symptoms. They include population growth, ageing and the rise of chronic disease; inequality in access to care and health outcomes; technological change (the good, bad and expensive); and the seemingly inexorable rise in health costs.

Circling for landing are three major reviews on primary care, low-value care and private health insurance. Their recommendations, and the government's response to them, are very much up in the air. Adding to the uncertainty is the broader review of federalism and its consequences for public hospi-



tal funding, along with speculation around the 2016 election date and what each party's Santa sack of election promises might contain.

Public hospitals

2016 will be a challenging year for public hospitals. Major reductions in Commonwealth funding for hospital admissions – which continue to grow – will kick in from 2017, and States are likely to start the belt-tightening early. The cuts far exceed the amount of fat in the system, so a reduction in services is likely. Efficiency may be improved somewhat by the ongoing expansion of activity-based

funding to mental health and 'sub-acute' care.

Hospitals will also be under pressure to lift quality. Hospitals face increasingly stringent 'quality standards' with tougher monitoring covering a broader scope of issues, including access and timeliness. Meanwhile, the increasing array of publicly available data is putting variation in hospital performance under the spotlight more and more, with commensurate calls for greater accountability.

Medicare

Two independent reviews of Medicare are expected to land sometime in 2016.

The first examines primary care. It could address any number of challenges, including chronic disease management, 'six-minute medicine', co-payments, frozen rebates, and the growing corporatisation of practice.

Chronic disease management poses the main challenge. The rise of chronic disease is imposing big costs on a system that wasn't designed to provide the complex, continuous and coordinated care now needed. Government will have to consider far-reaching reform with only limited and equivocal evidence to draw on.

Options include a shift in the balance of payments to practices, with less emphasis on payment for attendances (fee-for-service) and more emphasis on payment for care over the episode of illness or year (capitation payments).

There may be other changes in payment structures. The Government's longstanding desire to reduce perceived incentives for six-minute medicine may see a minimum consultation time imposed on the standard (Level B) fee. If sense prevails we won't see a resurrection of the GP co-payment policy zombie. We should, however, see an end to the freeze on medical rebates; the only question being when and with what trade-offs.

A further issue to be addressed is the shift toward practices owned by corporate chains that profit from referrals to and provision of diagnostic services. The implications of changed ownership structures for practice are not at the forefront of practice payment redesign but should be.

The second review looks at quality and cost-effectiveness of items on the Medicare schedule. The review got off to a rocky start with wild claims about 30%

waste in the system, but is now getting into the hard grind of identifying what items in what circumstances are ineffective or over-used – issues much more complex than simply identifying useless items and removing them from the schedule.

The work on modernising the schedule will come to fruition in 2016. There will be individual and group losers in this process who undoubtedly will scream loudly with varying levels of effectiveness.

Conclusion

It isn't yet clear whether Minister Ley's appetite for reviews portends massive reform to the sector, or simply a politically judicious preference for treading water in a portfolio still reeling from tumultuous management by her predecessor. However, the auguries are good for the former. The scene for change has been set, at least with the medical profession. Respectable leaders are engaged and leading the option-identification process. 2016 may well be the year that the health system rises to meet the big challenges of 21st century healthcare.

Stephen Duckett is the Director of the Health Program at Grattan Institute. Reprinted courtesy of NSW Doctor.

MEDICAL BENEVOLENT ASSOCIATION OF NSW

BY DOCTORS FOR DOCTORS

Your smile can help a colleague
Your words can ease the strain
YOU can make a difference today

www.mbansw.org.au

The Medical Benevolent Association of NSW (MBANSW)

Provides a free and confidential support service to Canberra doctors in need and their family. Financial assistance and counselling support are available to colleagues who have fallen on hard times through illness or untimely death. Support is also available to medical practitioners who may be experiencing difficulties at work or in their personal relationships.

The MBANSW is funded by your donations; please allow us to continue to provide support and assistance to your colleagues in need by making a donation to the Medical Benevolent Association Annual Appeal. Donations can be made visiting our website www.mbansw.org.au

If you are concerned about your own situation or that of a colleague, please contact the MBANSW Social Worker, Meredith McVey on (02) 9987 0504.

Dr Liz Gallagher, AMA (ACT) President, invites you to an OPEN FORUM with the AMA President, A/Prof Brian Owler

At the Auditorium, ANU Medical School,
Building 4, Canberra Hospital on Wednesday
30 March 2016 starting at 6.45pm.

The Forum will feature a short update from A/Prof Owler on current events at the AMA followed by questions from the floor.

If you can't make the Forum but would like to ask a question, please message AMA (ACT) on Facebook or email to execofficer@ama-act.com.au

Tea, coffee and refreshments will be available from 6.30pm.

The Forum is free and open to all medical practitioners in the ACT and surrounding areas, whether you are currently an AMA member or not.



AMA Public Hospital Report Card – ACT struggling

Earlier in February the AMA released its Public Hospital Report Card showing that there has been little, if any, improvement in public hospital performance in the four key areas reported. The four areas are – emergency department waiting and treatment times and elective surgery waiting and treatment times.



live up to the promises made by its predecessors to improve public hospitals.

“In the ACT in 2014-15, the results have been mixed with disappointing results on key Emergency Department indicators but improvements in some elements of elective surgery such that:

- Only 48% of urgent Emergency Department cases were seen within the recommended time of 30 minutes. This was a decrease from 50% in the previous year.
- In regard to elective surgery, waiting times have continued to reduce with the median waiting times now at 45 days

■ The percentage of Category 2 elective surgery patients admitted within the recommended time frame of 90 days has gone backwards to 69% from the previous year’s 74%.”

“While the improvements in elective surgery are welcome, along with the recently announced new beds in the Emer-

gency Department at Canberra Hospital, the fact is that ACT public hospitals continue to struggle to keep up.” Dr Gallagher said.

Despite acknowledging significant improvements in the waiting times for elective surgery, the association described the performance of ACT emergency departments as “disappointing”.

ACT AMA president Dr Liz Gallagher said hospital funding would be a key issue for both sides of politics, with a territory election scheduled for October 15.

“Health is always one of the hot topics in an election and both sides of politics know this is going to be a political issue,” she said.




Canberra Eye Laser – Canberra’s dedicated Refractive Laser Facility

- Revolutionary keyhole LASIK – ‘SMILE’
- Bladeless thin flap LASIK
- Zeiss Laser Technology

OBLIGATION FREE ASSESSMENT
CALL 1800 10 20 20

Ground floor, 16 Wilbow Street
Phillip ACT 2606
www.canberraeyelaser.com.au

 Find us on Facebook



A hospital dedicated to:

- > Informed & compassionate care
- > The latest technologies
- > Safety
- > Quality
- > Excellence

A member of the Australian Private Hospitals Association.
Accredited by Australian Council on Healthcare Standards.

PH 02 6217 5000

Ground floor, 16 Wilbow Street
Phillip ACT 2606
www.canberramicrosurgery.com.au

Substance use and addiction in primary care

Did you know that most people seeking help for substance use and addiction use their GPs as the first point of contact? GPs are well placed to assess these issues, provide brief intervention or refer for further treatment, as these things can take place within the context of a typical consultation session. Routine screening is recommended; but how do you know how to do an assessment, and what to do with the results? This article aims to help answer these questions.

Setting the scene

You really don't need to be told about the extent of alcohol and drug use in Australia, nor the significant harms caused to individuals, families and communities. Suffice to say, a significant proportion of the population consume alcohol and other drugs on a regular basis.

Substance use occurs on a continuum, from occasional use to dependence. Addiction is a pattern of use that is characterised by the syndrome of dependence in addition to compulsive substance-seeking behaviours and persistence, despite significant negative consequences. In general practice, it is likely you will see patients ranging across the entire spectrum.

Assessment is crucial

Assessment of the issues is the first important step in tailoring treatment, and this is where GP input is crucial, as the most common first contact.

So how do you do an assessment in primary care that optimises your chances of engaging the substance-using patient in treatment? First of all, always ask a patient if they are using alcohol or other drugs regularly. This is especially the case if they are presenting for mental health problems such as anxiety or depression. Sometimes their mental health problems can be due to the effects of substances, or they may be using substances to self-medicate for their mental health problems.

Remember that drugs can take many forms – illicit drugs of course, but also prescription drugs of abuse and dependence (Schedule 8), over the counter medications containing codeine, alcohol, tobacco and synthetic drugs such as synthetic cannabis (eg. 'Kronic', 'Marley'). Don't forget to ask about these, as many people don't consider prescribed or over the counter

medications as drugs. Keep in mind that polysubstance use is the norm, so patients are probably using more than one type of substance.

Assessment can include standardised measures of use that measure quantity consumed and the presence of dependence – such as the AUDIT (Alcohol Use Disorders Identification Test). However patients may tend to understate their intake and frequency, so it can be more helpful to assess the impact substances may be having on a patient's life. I find it

useful to use the acronym of HARM. Ask:

- Has your Health suffered as a result of your substance use?
- Has your ability to participate in your usual Activities been impacted?
- Are any of your Relationships suffering?
- Have you experienced any Money problems as a result of your substance use?

Answers to these questions may provide an indication as to

what kind of intervention is required.

The stages of change

Any referral or intervention must be guided by the patient's 'stage of change' with regards to their substance use. When considering behaviour change, individuals move through predictable stages of change:

- precontemplation - not ready to change;
- contemplation - considering change as an option, gathering information;



We speak your language
even if we do struggle to read your writing

As a doctor, you devote a great deal of time to understanding your patients.

At BOQ Specialist, we do the same with our clients.

So when you talk to a member of our team, you'll feel like you are talking to a colleague or a partner who understands exactly what you need. Unlike a conventional bank, we understand the unique idiosyncrasies of medical professionals and are on call to help with any of your business or personal banking requirements.

In fact, after nearly 20 years of working closely with doctors, you'll find we speak your language fluently (but please, no handwritten notes).

Visit us at boqspecialist.com.au/medical or speak to Lynne Kelly on 0420 970 594 or Caitlin Curry on 0424 191 323.

Equipment and fit-out finance / Credit cards / Home loans / Commercial property finance / Car finance / Practice purchase loans / SMSF lending and deposits / Transactional banking and overdrafts / Savings and deposits / Foreign exchange

The issuer of these products and services is BOQ Specialist – a division of Bank of Queensland Limited ABN 32 000 856 740 (P/L no. 244636 'BOQ Specialist'). Terms and conditions, fees and charges and lending and eligibility criteria apply. Any information is of a general nature only. We have not taken into account your objectives, financial situation, or needs when preparing it. Before acting on this information you should consider if it is appropriate for your situation. You should obtain and consider the relevant terms and conditions from www.boqspecialist.com.au before making any decision about whether to accept the product. BOQ Specialist is not offering financial, tax or legal advice. You should obtain independent financial, tax and legal advice as appropriate. We reserve the right to cease offering these products at any time without notice.

BOQSBO125 00/14

- preparation – making a plan for change;
- action – making the change; and
- maintenance – after around six months of sustaining behaviour change.

Each patient's stage of change must be matched with the appropriate intervention for optimal chance of success.

Matching stage of change to your intervention is crucial

For those who are consuming substances at less than risky levels, who are experiencing minimal harms, or who are pre-contemplative about change, education is encouraged. Education about safe consumption levels, safe using practices, and the physical and psychological effects of the substance may be useful. Providing information in the form of leaflets and websites is usually helpful. Try and 'leave the door open' for future consultation if they choose to change in the future.

For those who are consuming at risky levels, experiencing harms, or are contemplative about change, brief intervention and some basic motivational interviewing questions are required. Open questions about the negative impacts of substance use, coupled with an empathic, non-judgmental attitude can do wonders in helping a patient

move towards change. Ask these patients if they are interested in the kinds of help available and if they are, provide them with details of their local AOD service or a psychologist experienced in treating substance use. You can refer to a psychologist under the Better Access scheme.

If a patient is dependent on or addicted to a substance, or experiencing significant harms, more intensive intervention is required, including detoxification. Some skillful motivational interviewing questions will be helpful here, as many patients may be unconvinced of the need to change. A team approach here works best. Referral to an Addiction Medicine Specialist would be helpful. Referral to a clinical psychologist with experience and skill in treating these issues is highly recommended. Other options include the local AOD service, residential rehabilitation (many require patients to already be detoxed – you'll need to check this). DirectLine (1800 888 236) is a fantastic resource if you're not sure of your client's local health service or closest rehabilitation service.

AA or NA?

Alcoholics Anonymous (AA) and Narcotics Anonymous (NA) are support groups facilitated by community members who have experienced addiction themselves. They can be a great source of social support for

patients, however they should not be used as a standalone treatment as they are not informed or monitored by any kind of professionals. If a patient wants to try AA or NA, encourage them to attend a few different meetings to get an idea of which kind of meetings suit them.

A final word: get ready to be in it for the long haul

Progress with this population of patients is often slow. However this does not mean there is something wrong with the patient, they are not trying hard enough, or interventions are not working. It can be disheartening and even frustrating when patients persist with behaviours that are harmful to themselves and others. However it's important to remember that most people make many attempts at changing any behaviour before they are successful, and even then, there are often slip ups. Individuals with substance use problems are no different. The best way you can help in general practice is to persevere despite setbacks, and to always leave your door open. You never know – this consultation could be the one that sets the scene for long-term change.

Article by Melissa Kent, MAPS, Principal Clinical Psychologist Melissa Kent Psychology, Substance Use and Addiction Program, Delmont Private Hospital – courtesy of VicDoc magazine.



AMA (ACT) is now on Facebook!



AMA (ACT) has jumped into the wide world of Facebook so please get online and like us. It's a great way to find out what's going on quickly and keep up to date with events. Recent posts have featured the decision by Fair Work Australia to retain one agreement for ACT hospital doctors and the meeting with ACT Health Minister, Simon Corbell.

It's easy – just search for AMA ACT.

Important information for AMA ACT members

**REMINDER
2016 SUBSCRIPTION PAYMENTS
ARE NOW OVERDUE**

To renew your membership please go to website: <https://ama.com.au/act>

Or contact membership officer: membership@ama-act.com.au



exper+
orthopaedics



Dr Yeong Joe Lau is an Australian trained orthopaedic surgeon with an interest in disorders of the lower limb. He has now returned to Canberra to start practice after completing local and international fellowships in foot, ankle, knee and hip surgery.

Joe operates at The Canberra Hospital, Canberra Private Hospital and National Capital Private Hospital. He consults from The Specialist Consulting Suites at Canberra Private Hospital.

Please visit www.expertorthopaedics.com.au or call 02 6173 3709 for more information.

www.expertorthopaedics.com.au

FARE: The alcohol industry's dependence on Australia's heaviest drinkers

The Foundation for Alcohol Research and Education's (FARE's) latest research tells us that alcohol harms in Australia are extensive and well acknowledged: resulting in 5,500 deaths every year and a further 157,000 hospitalisations.

The alcohol industry's oft-cited defence to these statistics is to reference official per capita consumption which shows national alcohol consumption in decline to argue that Australia has become a nation of responsible drinkers.

FARE's recent research report, titled *Risky business*, shines a light on the industry's claims by revealing that the decline in the amount of alcohol being consumed as a nation in fact masks alarming patterns of consumption in significant segments of the population.

Outcomes

The findings contained in *Risky business* are drawn from an analysis of the study *Understanding recent trends in Australian alcohol consumption* by the Centre for Alcohol Policy Research (CAPR).

More than 3.8 million Australians average at least four standard drinks of alcohol per day or that's twice the recommended health guidelines.

Over 1.9 million Australians drink on average more than six standard drinks per day, three times the amount outlined in the



Australian Guidelines to Reduce Health risks from Drinking Alcohol. Just under a million Australians consume on average more than eight standard drinks a day, equivalent to more than four times the recommended health guidelines.

Risky business, which also comes as a video, exposes the alcohol industry's 'dirty little secret' – its economic dependence on these risky drinkers.

The 3.8 million Australians averaging more than four standard drinks of alcohol per

day represent just 20 per cent of all Australians aged 14 and over, yet this group accounts for a staggering 74.2 per cent of all the alcohol consumed nationally each year.

The alcohol industry's reliance on risky drinking is

brought into sharp relief when examining the economic impact of measures to encourage 'super consumers' to drink within the guidelines. If these 'super consumers' changed their habits to be within guidelines, the total alcohol consumed nationally would be reduced by 39 per cent.

The *Risky business* paper expands on the 'super consumer' story, providing greater detail on the alcohol consumption data, an overview of the Australian alcohol industry and an analysis of the impact on the industry if 'super consumers' were given the necessary support and encouragement to drink within the guidelines.

Recommendations

FARE's analysis of drinking patterns shows that a reduction in alcohol consumption by the top 20 per cent of Australian drinkers would have a dramatic effect on the alcohol industry's size, shape, viability, and overall profitability.

FARE says it is for this reason that public health researchers and advocates have refrained from working with the alcohol industry. FARE has now called on governments to do the same and cease co-operation with the industry.

For further information or to download or watch the *Risky business* materials go to <http://www.fare.org.au> and go to the Research tab.



BRINDABELLA
HEARING & SPEECH
CENTRE

MEETING DOCTORS' NEEDS

- ✓ Professional, timely reports
- ✓ Short wait time on referral appointments
- ✓ Priority placement for urgent diagnosis

Helping Canberra Communicate
DEAKIN • ERINDALE • BRUCE • QUEANBEYAN
www.hearingandspeech.com.au



Qantas Club membership rates for AMA members

Joining Fee: \$240 (save \$140)

1 Year Membership: \$390.60 (save \$119.30)

2 Year Membership: \$697.50 (save \$227.50)

(all rates are inclusive of GST)

To renew your Qantas Club Corporate Membership contact the secretariat to obtain the AMA corporate scheme number.

For further information or an application form please contact the AMA ACT secretariat on **6270 5410** or www.ama-act.com.au

New standards for CPD and recency of practice

The Medical Board of Australia has published revised registration standards for continuing professional development (CPD) and recency of practice.

The revised standards will take effect on 1 October 2016 with the MBA publishing them now in order to assist with a smooth transition. Registered medical practitioners must ensure they comply with the revised CPD and recency of practice registration standards from 1 October 2016.

Continuing professional development

Registered medical practitioners must ensure they comply with the revised CPD registration standard from 1 October 2016.

The revised CPD registration standard has not changed significantly. All registered medical practitioners must continue to participate in regular CPD activities.

Medical practitioners with specialist registration must continue to meet the requirements set out by their relevant college. Medical practitioners with general registration (who do not have specialist registration) must continue to complete a minimum of 50 hours CPD per year.

For medical practitioners with provisional registration or limited registration, the standard more clearly sets out the requirements to ensure their CPD is linked to their training position and/or supervision plan. The revised standard requires international medical graduates to complete a minimum of 50 hours CPD per year.

Recency of practice

The recency of practice standard has changed to the extent that practitioners will need to practise a minimum number of hours to meet the standard. The standard also explains requirements for returning to practice after an absence and requirements for changing scope of practice.

Practitioners must ensure they comply with the revised recency of practice registration standard from 1 October 2016.

To meet the standard, medical practitioners must practise within their scope of practice at any time for a minimum total of:

- four weeks full-time equivalent in one registration period, which is a total of 152 hours, or
- 12 weeks full-time equivalent over three consecutive registration periods, which is a total of 456 hours.

Full-time equivalent is 38 hours per week. The maximum

number of hours that can be counted per week is 38 hours. Medical practitioners who work part-time must complete the same minimum number of hours of practice – this can be completed part-time.

The Medical Board says that most practitioners who are currently practising will meet the revised standard.

The change may affect practitioners who are currently practising infrequently, or who have had a recent absence from practice or who are currently taking a temporary break from practice. The MNA has advised that a key reason why the revised standard has been published well before it takes effect is to provide practitioners with enough time to prepare for the changes.

If a medical practitioner cannot meet the minimum hours of practice in the revised standard, this will not necessarily prevent them from returning to practice as a medical practitioner. The standard sets out the requirements for medical practitioners who don't meet the standard, including those with non-practising registration and medical practitioners who are not registered and wish to return to practice after 1 October 2016.

The new standards can be found at: <http://www.medicalboard.gov.au/News/2016-02-02-recency-of-practice.aspx>



VR GP

The team at Lonsdale Street Medical Practice invites expressions of interest from experienced VR GPs to complement our newly established medical Practice.

Located within one of Canberra's premier social and residential hubs. The fast growing precinct of Braddon also provides ancillary services to support the needs of the adjoining Canberra city offices and commercial precinct.

Lonsdale St Medical Practice operates outside the Corporate Model to provide GPs with flexibility and autonomy in the way they manage their patient lists and working arrangements. Doctors will be well supported by specialised nursing and administrative teams with access to first class facilities.

For more information please contact:

Lisa Whillans
Practice Manager
lwhillans@tsmp.com.au
0401 973 820



Australian
National
University

RESEARCH STUDY

**Sexual abuse of doctors by doctors:
narrative research into sexual abuse
in the medical workplace**

Have you experienced an unwanted sexual encounter with another doctor?

Were you a qualified doctor at the time?

Would you be willing to talk about this experience with a researcher interested in reducing sexual harassment and abuse in the medical workplace?

If so, we would welcome your involvement in our qualitative study on sexual abuse of doctors, by doctors. There are a number of ways you are able to participate and tell your story.

Information

E louise.stone@anu.edu.au
W ofdoctorsbydoctors.com

2016 Directory of Medical Specialists, Directory of Allied Health Professionals and Directory of GPs with Special Interests

... a publication of the AMA ACT



The third edition of the directory of **Allied Health Professionals** and **GPs with Special Interests** will be published as a service to ACT general practitioners and distributed with the 11th edition of the **Directory of Medical Specialists** during Family Doctor Week in July 2016.

Entries must be on the form below and returned to the address below no later than 30 April 2016.

Mail: AMA ACT, PO Box 560, CURTIN ACT 2605
Fax: 6273 0455 Email: reception@ama-act.com.au

- Directory of Medical Specialists
 Directory of Allied Health Professionals
 Directory of GPs with Special Interests (Select which Directory you would like to go in)

Name:
Speciality:

Services offered:
(Please keep this brief and use only accepted abbreviations – eg: DCH, Diploma in Child Health)

Practice Details (1)

Practice Details (2)

Phone:	Phone:
Address:	Address:
Fax:	Fax:
Email:	Email:
Website:	Website:

I am/am not interested in taking a display advert to accompany my listing in the directory.

Signed: _____ Date: _____

AHPRA registration number: _____

Note: In order to be included in this directory, it is mandatory that you are a medical practitioner currently registered with the Australian Health Practitioner Regulation Authority (AHPRA) (dietitians excepted)

NOT FOR PUBLICATION

Contact Phone: _____

A proof of your entry will be sent prior to printing. Please indicate preferred method to receive this:

Fax number: _____ Email address: _____

Tomosynthesis breast biopsy

Breast tomosynthesis (3D mammography) acquires images of the breast at multiple angles. Individual images are reconstructed into a series of high resolution slices 1mm thick.

Tomosynthesis reduces the challenge of detecting invasive cancers in the presence of overlapping structures in the breast.

Compared with full field digital mammography, invasive cancer detection is increased by up to 40%, while false positives are decreased by 15-40%.

Breast compression is similar to that of standard mammography, and image acquisition is only a few seconds longer.

Radiation dose is well within accepted limits, particularly with synthesised 2D views.

Tomosynthesis guided vacuum-assisted breast biopsy has been available in the ACT since December 2015, enabling fast, accurate, minimally invasive tissue sampling of breast lesions



seen on 2D and 3D mammographic imaging which are invisible on ultrasound.

Compared with previous stereotactic techniques, initial experience has shown reduced procedure times, a potential for reduced radiation dose, ability

to biopsy lesions not seen on standard mammography, and successful sampling of low contrast lesions.

*By Dr Brendan Cranney, MBBS(Hons), FRANZCR
Image courtesy of Hologic, Inc and affiliates.*

Sexual abuse of doctors, by doctors: a narrative study

Contemporary attitudes to sexual abuse are changing. The Royal Commission into Institutional Responses to Child Sexual Abuse, the response of the Australian Defence Force to allegations of sexual abuse in the military and the work of the Australian Human Rights Commission around sexual harassment in the workplace all indicate a shift in community values.

Dr Louise Stone and her colleagues at the ANU believe that those changed attitudes have resulted in a shift in understanding of the nature and scope of professionalism including in the medical profession. Respected institutions have had professional failings exposed and it seems that few groups are immune. Existing codes of professional conduct have not protected colleagues or clients from toxic behaviour.

As a further step in this process the ANU group are involved in a study looking at the scope, impact and context of sexual abuse of qualified doctors in the medical workplace. Despite over a decade of research reporting that doctors, especially in the early part of

their training, experience sexual harassment, it is not clear how best to respond to this issue. With surprising little literature on the issue, there can be little clinical or academic conversation around the support and treatment we can offer these traumatised doctors, and no organisational response to the culture that enables or tolerates this behaviour. There is also little written about the impact of sexual abuse on the career aspirations and professional decisions of doctors.

This qualitative study currently being undertaken is designed to explore how doctors understand their experience, seek help for the effects of sexual trauma and pursue their careers in the wake of this experience.



ence. The study is the first of its type internationally and is being conducted by a team of GP researchers from ANU. The research team is supported by an expert reference group with expertise in ethically sensitive research processes, organisational behaviour change, effective methodological design, appropriate dissemination and effective research translation.

Further information about the study, including links to register interest in participating in the research, can be found at ofdoctorsbydoctors.com or by emailing Dr Louise Stone at louise.stone@anu.edu.au. A notice also appears in this edition of Canberra Doctor.

20 good reasons to be a member of the Australian Medical Association

BE AN
AMA
MEMBER
IN 2016

- 1) Political lobbying on behalf of the entire profession
- 2) An independent voice
- 3) Unprecedented engagement with ministers and the media
- 4) The AMA is there for you if things go wrong
- 5) Public education on public health and other medical issues
- 6) The scrapping of the tax cap for self-education expenses
- 7) AMA advocacy helps to reduce bureaucracy
- 8) The AMA supports medical leadership and clinician engagement
- 9) A proven record of supporting medical research
- 10) We fight for timely emergency and elective surgery, and beds
- 11) Lobbying for intern and training positions
- 12) Our opinion is valued: our submissions to Government are heeded
- 13) Resources: practice support tools, news, guidelines and position statements
- 14) Workplace advice, support and training
- 15) Support for the Medical Benevolent Association
- 16) Support for Doctors' Health
- 17) Commercial benefits and member discounts
- 18) The Medical Journal of Australia subscription is included
- 19) Fellowship and peer support, you are never alone
- 20) AMA MEMBERSHIP MAKES A DIFFERENCE

Go to join.ama.com.au or call (02) 6270 5410

* Don't forget, membership fees are tax deductible or may be claimable against PD allowances as they include the Medical Journal of Australia

Ph: 02 6270 5410 Fax: 02 6273 0455
PO Box 560, Curtin ACT 2605 www.ama-act.com.au



NEW
surgeon

Orthopaedics ACT

WELCOMES
Dr Policinski to our team



Dr Igor Policinski
MD, FRACS(Orth), FAOrthA
Orthopaedic Surgeon

Dr N Tsai
Dr D Smith
Dr C Roberts
Prof P Smith
Dr G Kulisiewicz
Dr P Aubin
Dr A Burns

Dr Igor Policinski specialises in orthopaedic conditions of the hand, wrist, elbow and shoulder including microsurgery, congenital malformations and Dupuytren's.

A Canberra local, Igor has returned following specialist fellowships with leading orthopaedic surgeons in the USA and Europe.

We are excited to have him join our team.

He will be practicing from Orthopaedics ACT's rooms in Woden and is currently able to provide short lead times for appointments and surgery.

Woden Specialist
Medical Centre
Lvl 2,
90 Corinna St
Woden ACT 2606

P: 02 6221 9340
E: ip.admin@orthoACT.com.au

www.orthoACT.com.au

Events...

Since the last edition of the *Canberra Doctor* we've had several events celebrating milestones for young doctors and medical students locally. The AMA's graduation breakfast featured at the end of last year where Federal AMA Vice president, Dr Steve Parnis and AMA (ACT)'s President-Elect, Dr Steve Robson, did the honours.

Later the same day, a very successful Graduation Ball for ANU Medical Students was held, with Dr Lauren O'Rourke being presented with the AMA (ACT) prize for student leader-

ship by AMA (ACT) Treasurer, Dr Andrew Miller.

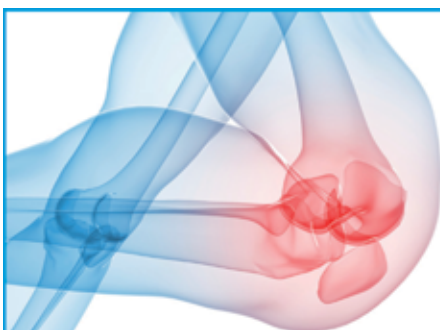
In early February, AMA (ACT) hosted a welcome for medical students at Unipub that saw some 80 first year students

come along to share AMA ACT's hospitality and be welcomed by Dr Liz Gallagher, AMA (ACT) President, Dr Lauren O'Rourke and Jazmin Hawes, the AMA (ACT) student rep.

Student Welcome Drinks



Graduation Ball



Dr Brendan Klar
MBBS, FRACS, FACrthA
Specialist Orthopaedic
Knee Surgeon

We see any knee condition that requires specialist attention including:

- Knee Replacement - Primary & Revision
- ACL, PCL & Multi-ligament Knee Surgery
- Knee Arthroscopy - Meniscal tears/ Loose bodies/Synovitis
- Knee Osteotomies - HTO and distal femoral
- Patella dislocation surgery
- Knee Fractures - femur/patella/tibia
- Cartilage Surgery



CANBERRA **KNEE** CLINIC

Dr Brendan Klar is pleased to introduce Canberra's first specialist **knee-only orthopaedic clinic**

Call (02) 6225 7410 for all appointments. www.canberrakneeclinic.com.au

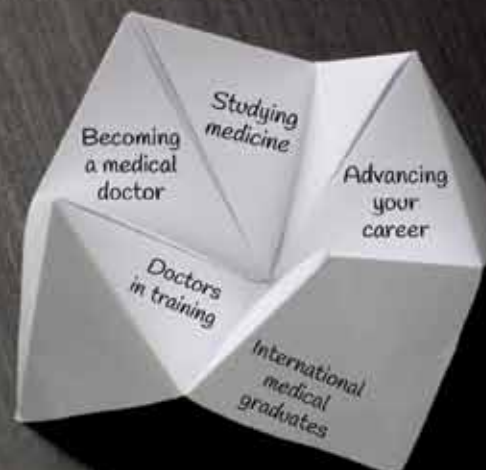
Graduation Breakfast



CAREER ADVICE HUB

Coming Soon

A new web-based resource offering Specialist Colleges training pathways, My Career Pathway - real life advice from experienced medical specialists and CME, and CPD tracking using the AMA's CPD tracker (www.dcatrainingportal.com.au)



THE AMA'S OWN CAREER ADVICE SERVICE

To assist you make informed choices, the Australian Medical Association has established a Career Advice Service so that you don't have to leave your career options to fortune.

The Career Advice Resource Hub (www.ama.com.au/careers) has information for:
a) Interns
b) pre-vocational and vocational trainees
c) international medical graduates and more.

The Career Advice Service assists members in preparing their resume, letter of application and provides advice, tips and tricks to up skill for interviews. A CV review service is also available (www.ama.com.au/careers).



For further information call the AMA Career Advice, Christine Brill on 1300 113 655 or email careers@ama.com.au or contact your State AMA.

BOOK REVIEW: Doctors Dissected

Jayne Haynes and Martin Scurr, Quartet Books, London, UK 2015: ISBN 978-0-70437-375-4, GBP 20

Jayne Haynes, a psychotherapist and Dr Martin Scurr, a GP present a series of interviews and reflections on life trajectory and career of a number of UK GPs and Scurr's son, Cosmo, an anaesthetic registrar. The book gives a view into the looking glass world of the UK general practice but is certainly not restricted to the NHS, as a number of the GPs describe work in the private medical sector. Haynes and Scurr both work in the Blue Door psychotherapy practice in London, which Haynes co-founded.

The diversity of the pathways into general practice is striking, in contrast to the current pressures upon young doctors in Australia to make haste into a speciality; but perhaps these tales mainly arise from the circumstances of previous era either in the forging of early experience or in the career, even in the UK.

There are stories from eight GP or GP trainees, including Martin Scurr, a junior doctor, and the story of Cosmo Scurr, as well as discussions into Martin Scurr's recurrent migraines, Hayne's irritable bowel syndrome and of course the mortality of the doctor. The richness here is in the depth of enquiry, which encompasses a lifespan history as well as career

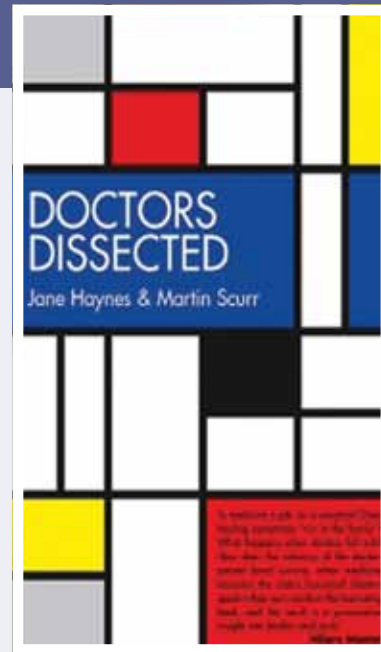
trajectory, viewed through the lens of Hayne's experience as a non-medical, formerly Jungian, now relational psychotherapist with considerable experience working with doctors.

Louring over all the stories, as the authors note are, as Raymond Tallis observed, the repeated re-disorganisations of the NHS. However, it is the thoughtfulness and honesty of the doctors in telling their stories that particularly shine a light on the experience of being a GP in the UK.

Certainly, there is vividness and depth in exploring personal stories that cannot be achieved solely by quantitative measurement or analysis. Whilst the psychotherapeutic lens is particularly useful in the one-to-one therapeutic setting, it is probably an over-reach to draw the threads together of the rich tapestry of the very different lives into summative psychodynamic conclusions without a systematic qualitative study. To

be fair, the authors mainly seek to identify themes. However, when from such a small sample the authors observe that all female doctors acknowledged some depression in their lives, whilst male doctors described none and proceeded to draw conclusions from there, the authors are over-reaching.

Overall, this is a very thoughtfully written and considered book that encompasses many aspects of the personal experience of being a doctor recognisably common to Australia and the UK. The richly described uniqueness of the doctors' personal and career journeys is remarkable. Yet, the looking glass element of the NHS is omnipresent, casting a strange reflection upon all. The courage and honesty of all the participants, authors and interviewees alike, is a commendably great gift bestowed upon us via Haynes and Scurr. I hope that there are many other stories told from our vocation in



the future, and similarly from my own profession such as Dr Christine Montross's *Falling into Fire* (reviewed previously in the *Canberra Doctor*).

Reviewed by Associate Professor Jeffrey Looi, Academic Unit of Psychiatry and Addiction Medicine, ANU Medical School.

Changes for the Canberra Doctor

Prior to Christmas we conducted a survey of readers of the *Canberra Doctor* to get your feedback and to look at ways of improving our content and production.

We also offered a prize for completing the survey and congratulations to Dr Thi Tran of Tumut on winning the \$250 Coles Myer Gift card.

Overall, the survey revealed that most readers are satisfied with the current content and like the emphasis on local, ACT stories and news. We also asked for ideas on possible future articles, stories or other content readers would like to see. The responses, as you might imagine, were many and varied – features on local doctors, aboriginal health, reflections on Canberra life, reports from Canberra doctors working overseas,

financial stories, insights from local doctors' lives away from medicine, information on local medical research, humour, puzzles, Choice-like medical equipment reviews and many others.

Our thanks to all the contributors and some of these stories will certainly appear over 2016.

As well as considering possible content for the *Canberra Doctor*, we've also been considering the design and format. As a result, the next edition of *Canberra Doctor* will feature a new design but also come as a magazine-style format in a more convenient size and weight.

Look out for that edition in late March.



Membership Rewards Program Partners ~ 10% discount*

■ Belluci's Restaurants

(Phillip) Ph: (02) 6282 1700

& (Manuka) Ph: (02) 6239 7424

– Award winning, casual Italian dining. * conditions apply.

■ Crabtree and Evelyn

(Canberra Centre) Ph: (02) 6257 7722

– Bath and body products, gourmet foods, candles, home decor, and gifts for any occasion.

■ The Essential Ingredient

(Kingston) Ph: (02) 6295 7148

– Inspiring great cooking with ingredients, books and cookware.

■ Evo Health Club

(Barton) Ph: (02) 6162 0808 – Hotel Realm.

■ Hotel Realm

(Barton) Ph: (02) 6163 1888

– Accommodation only.

■ Jirra Wines

Fax: 6227 5171

– You don't need to go to Tuscany for good Italian wines.

Canberra has a climate very close to Tuscany's.

■ Joanne Flowers

(Manuka) Ph: (02) 6295 0315

– Beautiful Flowers and Gifts.

* conditions may apply.



Crabtree & Evelyn



HOTEL
REALM



Joanne Flowers

Canberra DOCTOR

A News Magazine for all Doctors in the Canberra Region
ISSN 13118X25

Published by the Australian Medical Association (ACT) Limited
42 Macquarie St Barton
(PO Box 560, Curtin ACT 2605)

Editorial:
Peter Somerville
Ph 6270 5410 Fax 6273 0455
editorial@ama-act.com.au

Typesetting:
Design Graphix
Ph 0410 080 619

Editorial Committee:
Dr Jo-Anne Benson
Peter Somerville
– Production Mngnr
Dr Ray Cook
Dr James Cookman
Dr John Donovan
A/Prof Jeffrey Looi
Dr Ian Pryor
Ms Lara Whitbourne

Advertising:
Ph 6270 5410, Fax 6273 0455
execofficer@ama-act.com.au

Articles:
Copy is preferred by email to
execofficer@ama-act.com.au
in "Microsoft Word" or RTF format,
(not PDF) with graphics in TIFF, EPS
or JPEG format. Next edition of
Canberra Doctor – March 2016.

Disclaimer

The Australian Medical Association (ACT) Limited shall not be responsible in any manner whatsoever to any person who relies, in whole or in part, on the contents of this publication unless authorised in writing by it.
The comments or conclusion set out in this publication are not necessarily approved or endorsed by the Australian Medical Association (ACT) Limited.

ROOMS TO LET

CANBERRA SPECIALIST CENTRE

80 square metres
Fully furnished
Procedure room with ensuite toilet
Excellent location with all medical facilities nearby
Contact 02 6285 1292
0411 591 642

FOR RENT

67/12 Challis Street
DICKSON ACT

- 150 square metre + four security car parking
 - Ground floor office with well fit-out
 - 5 consultation rooms
 - Air conditioned
 - Alarm system & nice looking receptionist area.
- Suitable for a Doctor clinic.
\$6500.00 per year

CHARLES: 0409 558 852
dr_y_b_cai@hotmail.com

AMA ACT membership entitles you to access this Member Reward Partner

BELLUCI'S RESTAURANTS

Ph: (02) 6282 1700 (Phillip)
Ph: (02) 6239 7424 (Manuka)
– Award winning, casual Italian dining.

Conditions may apply and you must produce your membership card to access these benefits.

AMA ACT membership entitles you to access this Member Reward Partner

Crabtree & Evelyn
CRABTREE & EVELYN

Ph: (02) 6257 7722
– Bath and body products, gourmet foods, candles, home decor, and gifts for any occasion

Conditions may apply and you must produce your membership card to access these benefits.

Fast Track TRAUMA MANAGEMENT



OrthopaedicsACT's experienced surgeons now provide priority appointments for privately insured patients in our Tuesday afternoon fracture and trauma clinic.

Patients can speak with our specialist orthopaedic nurses to receive an over the phone injury assessment and appointment by calling 0459 343 734.

www.orthoACT.com.au



OrthopaedicsACT

bonsella
BUSINESS SOLUTIONS

Tax, Accounting & Business Services

We specialise in tax planning and effective business structuring for medical and healthcare professionals.

Our services include:

- Tax return preparation
- Financial reporting
- BAS preparation
- Self-managed super funds
- Practice establishment

6257 4144

bonsella.com.au

THE BEST WAY TO PREDICT YOUR FUTURE IS TO CREATE IT

Let's talk about last year's resolutions.

Don't let another resolution get you down. *doctorportal Learning* is the best resource to help you get on top of your continuing professional development in 2016.

Log on to www.doctorportal.com.au, register now, it's free for AMA members.

RESOLUTIONS 2015

Lose weight

Save money

Do CPD

More family time

 Learning



Find out more at learning.doctorportal.com.au

OFFICE SPACE TO LET

77 Denison Street DEAKIN
(backing onto Calvary John
James Hospital)
200 metres fitted out medical
suite. Generous parking.
Phone Maria: 6282 1783

Dr Elizabeth O'Leary
(MBBS, MPH)
Medical Acupuncturist
Chronic pain conditions
Osteoarthritis
Chronic headache and migraine
1/46 Geils Court, Deakin 2600
www.capitalmedacupuncture.com
Ph: 0448 478 877

Dr Colin Andrews, Neurologist

is pleased to offer
same week assessment
for first seizure.

This will involve an EEG only.
The advantages of this service are
as follows:

1. Higher yield of abnormality on the EEG soon after a seizure.
2. Reduction of risk of subsequent seizure.
3. Reduced anxiety and better compliance with the management plan.

Suite A8
Canberra Specialist Centre
161 Strickland Crescent
DEAKIN ACT 2600
Telephone: (02) 6282 4807
Facsimile: (02) 6285 3609

Dr Sabari Saha

MBBS (Hons), FRACP

GERIATRIC MEDICINE
PHYSICIAN

- Comprehensive Geriatric assessments
- Falls assessments
- Cognitive assessments
- Medication reviews
- Home visits & Residential Aged Care Facility visits
Hospital admissions can be arranged
Bulk Billing available

Suite 11/12, Napier Close,
Deakin ACT 2605
Phone: 02 6154 5031
Fax: 02 6169 4437

WOMEN'S HEALTH ON STRICKLAND

Dr Liz Gallagher and Dr Omar Adham have now
introduced the *MonaLisa Touch* to their practice.

MonaLisa Touch is an innovative 5 minute,
non-hormonal laser treatment that achieves lasting
improvements for patients suffering from:

- ~ Dyspareunia
- ~ Incontinence and Urinary Urgency
- ~ Vaginal itchiness and burning
- ~ Dryness and loss of lubrication
- ~ Prolapse and laxity
- ~ Vaginal and vulval pain

For further information
please call the practice on 02 6282 2033
or email reception@womenshealthonstrickland.com.au



CANBERRA LASER AND GYNAECOLOGY CENTRE

colposcopy & laser
endoscopic surgery
specialist gynaecology
treatment of prolapse
and incontinence

Dr. P.M.V. Mutton
MBBS, FRCOG, FRANZCOG

for prompt, personalised
and
experienced care

6273 3102

39 GREY STREET DEAKIN ACT 2600
FAX 6273 3002



Dr Andrew Foote
Obstetrician, Gynaecologist & Urogynaecologist
Over 20 years experience

Special Interests in:

- NEW: Botox Intra-vesical Injections for OAB
- obstetrics
- prolapse
- incontinence
- Mona Lisa vaginal laser

1/30 Bougainville Street, Manuka
Phone 1800 URO GYN

www.totalwomenshealth.com.au



Dr Maciek Kuzniarz

Ophthalmologist & Oculoplastic Surgeon

Comprehensive general ophthalmology services and oculoplastic
surgery including:

- ▶ Cataract surgery
- ▶ Pterygium surgery
- ▶ AMD management
- ▶ Blepharoplasty
- ▶ Eyelid tumour excision
- ▶ Lid reconstruction
- ▶ Medical botox therapy
- ▶ Lacrimal surgery



New
location in
Braddon

New location at Unit 2, 102 Northbourne Ave, Braddon ACT 2612

T. 02 6102 1130 | F. 02 6102 1230 | E. info@eyevisioncanberra.com.au
W. www.eyevisioncanberra.com.au | CONVENIENT PARKING NEARBY

AMA ACT membership
entitles you to access this
Member Reward Partner

Joanne Flowers

JOANNE FLOWERS

Ph: (02) 6295 0315

- Beautiful Flowers and Gifts

Conditions may apply and you must produce your
membership card to access these benefits.

**To Advertise
in Canberra
Doctor**

email
execofficer@
ama-act.com.au



Orthopaedic Surgeon

PRACTICE LOCATION



Dr Wisam Ihsheish
MBBS (Adel) FRACS (orth) FAOrthoA

**Knee arthroscopic
surgery, hip and knee
replacements and
general orthopaedics**

Accepting new referrals in
Canberra and Goulburn

CANBERRA
5/5 Baratta St, Crace ACT 2911
Ph 6109 0002
Fax 6109 0003

GOULBURN
ELLESMERE
SPECIALIST CENTRE
56-58 Clifford St,
Goulburn NSW 2580
Ph 4823 0223
Fax 4822 5417



Strategic Psychology

Adult Counselling
Relationship Counselling
Child & Adolescent Counselling
Child, Adolescent & Adult Assessments
Family Therapy

www.strategicpsychology.com.au • 6262 6157